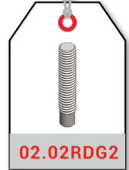


Malzeme / Material : Çelik 4.8 Çinko Kaplı / Steel 4.8 Zinc Coated

| Ölçülendirme / Dimensions | | | | | | | Kuvvet / Forces | Ürün / Product |
|---------------------------|--------------------------------------|-------------------------|------------------------------|---------------------|------------------------------|-----------|-----------------------------------------------------------------------------|--------------------------------------------------------------------------------------|
| Çap Diameter | Boy Length | Kafa Çapı Head Diameter | Pim Çapı Pin Diameter | Pim Boyu Pin Length | Kafa Altı Under Head | Açı Angle | Çelik / Steel 4.8 ¹⁾ R _{p0.2} =340 N/mm ² |  |
| d ₁ | l ₂ ²⁾ +0.6 | d ₂ ±0.1 | d ₃ ¹⁾ | y+2P | h ₄ ¹⁾ | α ±7° | Kesme Torku (Nm) Shearing Torque (Nm) | |
| M6 | 10 | 4.7 | 7.0 | 4.0 | 2.5 | 140° | 4.0 | 02.02RDG2.M610 |
| | 12 | | | | | | | 02.02RDG2.M612 |
| | 15 | | | | | | | 02.02RDG2.M615 |
| | 20 | | | | | | | 02.02RDG2.M620 |
| | 25 | | | | | | | 02.02RDG2.M625 |
| | 30 | | | | | | | 02.02RDG2.M630 |
| | 35 | | | | | | | 02.02RDG2.M635 |
| | 40 | | | | | | | 02.02RDG2.M640 |
| | 45 | | | | | | | 02.02RDG2.M645 |
| | 50 | | | | | | | 02.02RDG2.M650 |
| | 55 | | | | | | | 02.02RDG2.M655 |
| 60 | 02.02RDG2.M660 | | | | | | | |

* DIN EN ISO 13918'e uygundur. / Similar to DIN EN ISO 13918.

* Minimum 4 mm ve üstü sac kalınlığına uygulanabilir. / It can be applied to minimum sheet thickness of 4 mm and above

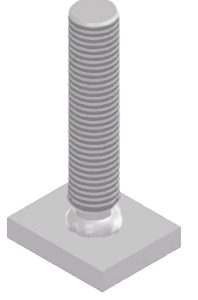
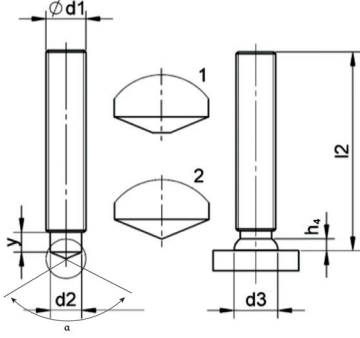
* Tüm ölçüler mm cinsindedir. / All dimensions are in mm.

* Tüm boy ölçülerinde [+0,1/-0,5] mm tolerans değeri olasıdır. / A tolerance value of [+0,1/-0,5] mm is possible for all length dimensions.


* Ölçü standart M06 ve M24 arasındadır (M14 ve M24 ölçüleri sorunuz) / Size standard is between M06 and M24 (Ask for M14 and M24 dimensions)

* Uygulama videosu için QR kodu okutun. / Scan the QR code for the application video.





Malzeme / Material : Çelik 4.8 Çinko Kaplı / Steel 4.8 Zinc Coated

| Ölçülendirme / Dimensions | | | | | | | Kuvvet / Forces | Ürün / Product |
|---------------------------|--------------------------------------|-------------------------|------------------------------|---------------------|------------------------------|-----------|-----------------------------------------------------------------------------|--------------------------------------------------------------------------------------|
| Çap Diameter | Boy Length | Kafa Çapı Head Diameter | Pim Çapı Pin Diameter | Pim Boyu Pin Length | Kafa Altı Under Head | Açı Angle | Çelik / Steel 4.8 ¹⁾ R _{p0.2} =340 N/mm ² |  |
| d ₁ | l ₂ ²⁾ +0.6 | d ₂ ±0.1 | d ₃ ¹⁾ | y+2P | h ₄ ¹⁾ | α ±7° | Kesme Torku (Nm) Shearing Torque (Nm) | |
| M8 | 10 | 6.2 | 9.0 | 4.0 | 2.5 | 140° | 9.5 | 02.02RDG2.M810 |
| | 12 | | | | | | | 02.02RDG2.M812 |
| | 15 | | | | | | | 02.02RDG2.M815 |
| | 20 | | | | | | | 02.02RDG2.M820 |
| | 25 | | | | | | | 02.02RDG2.M825 |
| | 30 | | | | | | | 02.02RDG2.M830 |
| | 35 | | | | | | | 02.02RDG2.M835 |
| | 40 | | | | | | | 02.02RDG2.M840 |
| | 45 | | | | | | | 02.02RDG2.M845 |
| | 50 | | | | | | | 02.02RDG2.M850 |
| | 55 | | | | | | | 02.02RDG2.M855 |
| 60 | 02.02RDG2.M860 | | | | | | | |

* DIN EN ISO 13918'e uygundur. / Similar to DIN EN ISO 13918.

* Minimum 4 mm ve üstü sac kalınlığına uygulanabilir. / It can be applied to minimum sheet thickness of 4 mm and above

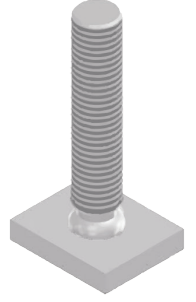
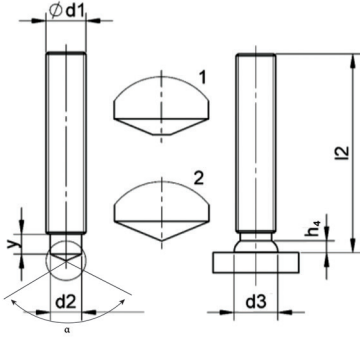
* Tüm ölçüler mm cinsindedir. / All dimensions are in mm.

* Tüm boy ölçülerinde [+0,1/-0,5] mm tolerans değeri olasıdır. / A tolerance value of [+0,1/-0,5] mm is possible for all length dimensions.

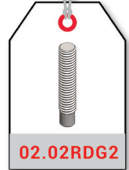
* Ölçü standart M06 ve M24 arasındır (M14 ve M24 ölçüleri sorunuz) / Size standard is between M06 and M24 (Ask for M14 and M24 dimensions)

* Uygulama videosu için QR kodu okutun. / Scan the QR code for the application video.





Malzeme / Material : Çelik 4.8 Çinko Kaplı / Steel 4.8 Zinc Coated

| Ölçülendirme / Dimensions | | | | | | | Kuvvet / Forces | Ürün / Product |
|---------------------------|--------------------------------------|-------------------------|------------------------------|---------------------|------------------------------|-----------|-----------------------------------------------------------------------------|--------------------------------------------------------------------------------------|
| Çap Diameter | Boy Length | Kafa Çapı Head Diameter | Pim Çapı Pin Diameter | Pim Boyu Pin Length | Kafa Altı Under Head | Açı Angle | Çelik / Steel 4.8 ¹⁾ R _{p0.2} =340 N/mm ² |  |
| d ₁ | l ₂ ²⁾ +0.6 | d ₂ ±0.1 | d ₃ ¹⁾ | y+2P | h ₄ ¹⁾ | α ±7° | Kesme Torku (Nm) Shearing Torque (Nm) | |
| M10 | 10 | 7.9 | 11.5 | 5.0 | 3.0 | 140° | 18.5 | 02.02RDG2.M1010 |
| | 12 | | | | | | | 02.02RDG2.M1012 |
| | 15 | | | | | | | 02.02RDG2.M1015 |
| | 20 | | | | | | | 02.02RDG2.M1020 |
| | 25 | | | | | | | 02.02RDG2.M1025 |
| | 30 | | | | | | | 02.02RDG2.M1030 |
| | 35 | | | | | | | 02.02RDG2.M1035 |
| | 40 | | | | | | | 02.02RDG2.M1040 |
| | 45 | | | | | | | 02.02RDG2.M1045 |
| | 50 | | | | | | | 02.02RDG2.M1050 |
| | 55 | | | | | | | 02.02RDG2.M1055 |
| 60 | 02.02RDG2.M1060 | | | | | | | |

* DIN EN ISO 13918'e uygundur. / Similar to DIN EN ISO 13918.

* Minimum 4 mm ve üstü sac kalınlığına uygulanabilir. / It can be applied to minimum sheet thickness of 4 mm and above

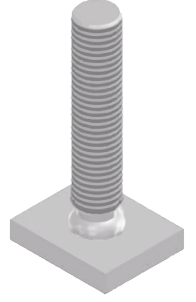
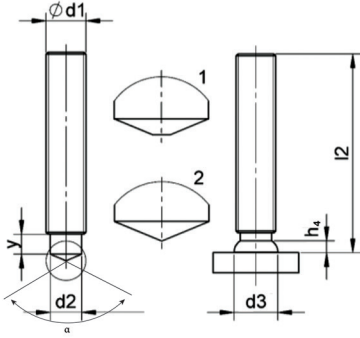
* Tüm ölçüler mm cinsindedir. / All dimensions are in mm.

* Tüm boy ölçülerinde [+0,1/-0,5] mm tolerans değeri olasıdır. / A tolerance value of [+0,1/-0,5] mm is possible for all length dimensions.

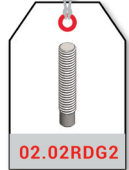
* Ölçü standart M06 ve M24 arasındadır (M14 ve M24 ölçüleri sorunuz) / Size standard is between M06 and M24 (Ask for M14 and M24 dimensions)

* Uygulama videosu için QR kodu okutun. / Scan the QR code for the application video.





Malzeme / Material : Çelik 4.8 Çinko Kaplı / Steel 4.8 Zinc Coated

| Ölçülendirme / Dimensions | | | | | | | Kuvvet / Forces | Ürün / Product |
|---------------------------|--------------------------------------|-------------------------|------------------------------|---------------------|------------------------------|-----------|-----------------------------------------------------------------------------|--------------------------------------------------------------------------------------|
| Çap Diameter | Boy Length | Kafa Çapı Head Diameter | Pim Çapı Pin Diameter | Pim Boyu Pin Length | Kafa Altı Under Head | Açı Angle | Çelik / Steel 4.8 ¹⁾ R _{p0.2} =340 N/mm ² |  |
| d ₁ | l ₂ ²⁾ +0.6 | d ₂ ±0.1 | d ₃ ¹⁾ | y+2P | h ₄ ¹⁾ | α ±7° | Kesme Torku (Nm) Shearing Torque (Nm) | |
| M12 | 10 | 9.5 | 13.5 | 6.0 | 4.0 | 140° | 32.5 | 02.02RDG2.M1210 |
| | 12 | | | | | | | 02.02RDG2.M1212 |
| | 15 | | | | | | | 02.02RDG2.M1215 |
| | 20 | | | | | | | 02.02RDG2.M1220 |
| | 25 | | | | | | | 02.02RDG2.M1225 |
| | 30 | | | | | | | 02.02RDG2.M1230 |
| | 35 | | | | | | | 02.02RDG2.M1235 |
| | 40 | | | | | | | 02.02RDG2.M1240 |
| | 45 | | | | | | | 02.02RDG2.M1245 |
| | 50 | | | | | | | 02.02RDG2.M1250 |
| | 55 | | | | | | | 02.02RDG2.M1255 |
| 60 | 02.02RDG2.M1260 | | | | | | | |

* DIN EN ISO 13918'e uygundur. / Similar to DIN EN ISO 13918.

* Minimum 4 mm ve üstü sac kalınlığına uygulanabilir. / It can be applied to minimum sheet thickness of 4 mm and above

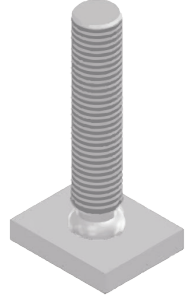
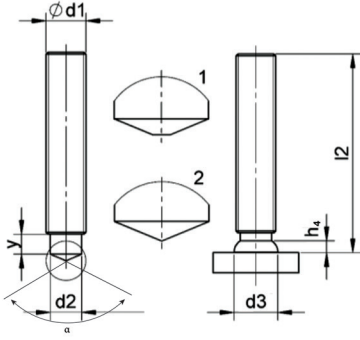
* Tüm ölçüler mm cinsindedir. / All dimensions are in mm.

* Tüm boy ölçülerinde [+0,1/-0,5] mm tolerans değeri olasıdır. / A tolerance value of [+0,1/-0,5] mm is possible for all length dimensions.

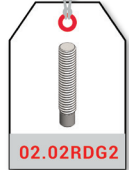
* Ölçü standart M06 ve M24 arasındadır (M14 ve M24 ölçüleri sorunuz) / Size standard is between M06 and M24 (Ask for M14 and M24 dimensions)

* Uygulama videosu için QR kodu okutun. / Scan the QR code for the application video.





Malzeme / Material : Çelik 4.8 Çinko Kaplı / Steel 4.8 Zinc Coated

| Ölçülendirme / Dimensions | | | | | | | Kuvvet / Forces | Ürün / Product |
|---------------------------|--------------------------------------|-------------------------|------------------------------|---------------------|------------------------------|-----------|-----------------------------------------------------------------------------|--------------------------------------------------------------------------------------|
| Çap Diameter | Boy Length | Kafa Çapı Head Diameter | Pim Çapı Pin Diameter | Pim Boyu Pin Length | Kafa Altı Under Head | Açı Angle | Çelik / Steel 4.8 ¹⁾ R _{p0.2} =340 N/mm ² |  |
| d ₁ | l ₂ ²⁾ +0.6 | d ₂ ±0.1 | d ₃ ¹⁾ | y+2P | h ₄ ¹⁾ | α ±7° | Kesme Torku (Nm) Shearing Torque (Nm) | |
| M16 | 10 | 13.2 | 18.0 | 7.5 | 5.0 | 140° | 80.0 | 02.02RDG2.M1610 |
| | 12 | | | | | | | 02.02RDG2.M1612 |
| | 15 | | | | | | | 02.02RDG2.M1615 |
| | 20 | | | | | | | 02.02RDG2.M1620 |
| | 25 | | | | | | | 02.02RDG2.M1625 |
| | 30 | | | | | | | 02.02RDG2.M1630 |
| | 35 | | | | | | | 02.02RDG2.M1635 |
| | 40 | | | | | | | 02.02RDG2.M1640 |
| | 45 | | | | | | | 02.02RDG2.M1645 |
| | 50 | | | | | | | 02.02RDG2.M1650 |
| | 55 | | | | | | | 02.02RDG2.M1655 |
| 60 | 02.02RDG2.M1660 | | | | | | | |

* DIN EN ISO 13918'e uygundur. / Similar to DIN EN ISO 13918.

* Minimum 4 mm ve üstü sac kalınlığına uygulanabilir. / It can be applied to minimum sheet thickness of 4 mm and above

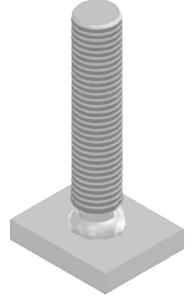
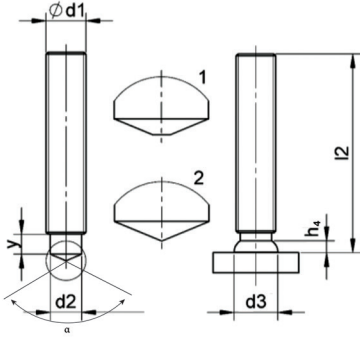
* Tüm ölçüler mm cinsindedir. / All dimensions are in mm.

* Tüm boy ölçülerinde [+0,1/-0,5] mm tolerans değeri olasıdır. / A tolerance value of [+0,1/-0,5] mm is possible for all length dimensions.

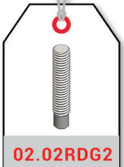
* Ölçü standart M06 ve M24 arasındadır (M14 ve M24 ölçüleri sorunuz) / Size standard is between M06 and M24 (Ask for M14 and M24 dimensions)

* Uygulama videosu için QR kodu okutun. / Scan the QR code for the application video.





Malzeme / Material : Çelik 4.8 Çinko Kaplı / Steel 4.8 Zinc Coated

| Ölçülendirme / Dimensions | | | | | | | Kuvvet / Forces | Ürün / Product |
|---------------------------|--------------------------------------|-------------------------|------------------------------|---------------------|------------------------------|-----------|-----------------------------------------------------------------------------|--------------------------------------------------------------------------------------|
| Çap Diameter | Boy Length | Kafa Çapı Head Diameter | Pim Çapı Pin Diameter | Pim Boyu Pin Length | Kafa Altı Under Head | Açı Angle | Çelik / Steel 4.8 ¹⁾ R _{p0.2} =340 N/mm ² |  |
| d ₁ | l ₂ ²⁾ +0.6 | d ₂ ±0.1 | d ₃ ¹⁾ | y+2P | h ₄ ¹⁾ | α ±7° | Kesme Torku (Nm) Shearing Torque (Nm) | |
| M20 | 10 | 16.5 | 23.0 | 9.0 | 6.0 | 140° | 155.0 | 02.02RDG2.M2010 |
| | 12 | | | | | | | 02.02RDG2.M2012 |
| | 15 | | | | | | | 02.02RDG2.M2015 |
| | 20 | | | | | | | 02.02RDG2.M2020 |
| | 25 | | | | | | | 02.02RDG2.M2025 |
| | 30 | | | | | | | 02.02RDG2.M2030 |
| | 35 | | | | | | | 02.02RDG2.M2035 |
| | 40 | | | | | | | 02.02RDG2.M2040 |
| | 45 | | | | | | | 02.02RDG2.M2045 |
| | 50 | | | | | | | 02.02RDG2.M2050 |
| | 55 | | | | | | | 02.02RDG2.M2055 |
| 60 | 02.02RDG2.M2060 | | | | | | | |

* DIN EN ISO 13918'e uygundur. / Similar to DIN EN ISO 13918.

* Minimum 4 mm ve üstü sac kalınlığına uygulanabilir. / It can be applied to minimum sheet thickness of 4 mm and above

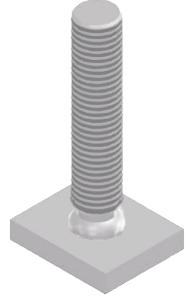
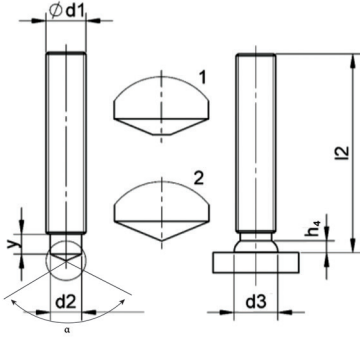
* Tüm ölçüler mm cinsindedir. / All dimensions are in mm.

* Tüm boy ölçülerinde [+0,1/-0,5] mm tolerans değeri olasıdır. / A tolerance value of [+0,1/-0,5] mm is possible for all length dimensions.

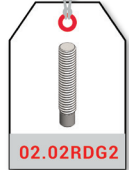
* Ölçü standart M06 ve M24 arasındadır (M14 ve M24 ölçüleri sorunuz) / Size standard is between M06 and M24 (Ask for M14 and M24 dimensions)

* Uygulama videosu için QR kodu okutun. / Scan the QR code for the application video.





Malzeme / Material : Çelik 4.8 Çinko Kaplı / Steel 4.8 Zinc Coated

| Ölçülendirme / Dimensions | | | | | | | Kuvvet / Forces | Ürün / Product |
|---------------------------|--------------------------------------|-------------------------|------------------------------|---------------------|------------------------------|-----------|-----------------------------------------------------------------------------|--------------------------------------------------------------------------------------|
| Çap Diameter | Boy Length | Kafa Çapı Head Diameter | Pim Çapı Pin Diameter | Pim Boyu Pin Length | Kafa Altı Under Head | Açı Angle | Çelik / Steel 4.8 ¹⁾ R _{p0.2} =340 N/mm ² |  |
| d ₁ | l ₂ ²⁾ +0.6 | d ₂ ±0.1 | d ₃ ¹⁾ | y+2P | h ₄ ¹⁾ | α ±7° | Kesme Torku (Nm) Shearing Torque (Nm) | |
| M24 | 10 | 20.0 | 28.0 | 12.0 | 7.0 | 140° | 270.0 | 02.02RDG2.M2410 |
| | 12 | | | | | | | 02.02RDG2.M2412 |
| | 15 | | | | | | | 02.02RDG2.M2415 |
| | 20 | | | | | | | 02.02RDG2.M2420 |
| | 25 | | | | | | | 02.02RDG2.M2425 |
| | 30 | | | | | | | 02.02RDG2.M2430 |
| | 35 | | | | | | | 02.02RDG2.M2435 |
| | 40 | | | | | | | 02.02RDG2.M2440 |
| | 45 | | | | | | | 02.02RDG2.M2445 |
| | 50 | | | | | | | 02.02RDG2.M2450 |
| | 55 | | | | | | | 02.02RDG2.M2455 |
| 60 | 02.02RDG2.M2460 | | | | | | | |

* DIN EN ISO 13918'e uygundur. / Similar to DIN EN ISO 13918.

* Minimum 4 mm ve üstü sac kalınlığına uygulanabilir. / It can be applied to minimum sheet thickness of 4 mm and above

* Tüm ölçüler mm cinsindedir. / All dimensions are in mm.

* Tüm boy ölçülerinde [+0,1/-0,5] mm tolerans değeri olasıdır. / A tolerance value of [+0,1/-0,5] mm is possible for all length dimensions.

* Ölçü standart M06 ve M24 arasındır (M14 ve M24 ölçüleri sorunuz) / Size standard is between M06 and M24 (Ask for M14 and M24 dimensions)

* Uygulama videosu için QR kodu okutun. / Scan the QR code for the application video.

