


Malzeme / Material : Paslanmaz Çelik A2-50 Naturel / Stainless Steel A2-50 Natural

Ölçülendirme / Dimensions							Kuvvet / Forces	Ürün / Product
Çap Diameter	Boy Length	Kafa Çapı Head Diameter	Pim Çapı Pin Diameter	Pim Boyu Pin Length	Kafa Altı Under Head	Açı Angle	A2-50 $R_{p0.2}=210 \text{ N/mm}^2$	
d_1	$l_2^{2)}$ +0.6	d_2 ±0.1	$d_3^{1)}$	y+2P	$h_4^{1)}$	α ±7°	Kesme Torku (Nm) Shearing Torque (Nm)	
M6	10	4.7	7.0	4.0	2.5	140°	2.5	03.03RDG3.M610
	12							03.03RDG3.M612
	15							03.03RDG3.M615
	20							03.03RDG3.M620
	25							03.03RDG3.M625
	30							03.03RDG3.M630
	35							03.03RDG3.M635
	40							03.03RDG3.M640
	45							03.03RDG3.M645
	50							03.03RDG3.M650
	55							03.03RDG3.M655
	60							03.03RDG3.M660
	70							03.03RDG3.M670
	80							03.03RDG3.M680
100	03.03RDG3.M6100							

* DIN EN ISO 13918'e uygundur. / Similar to DIN EN ISO 13918.

* Minimum 4 mm ve üstü sac kalınlığına uygulanabilir. / It can be applied to minimum sheet thickness of 4 mm and above

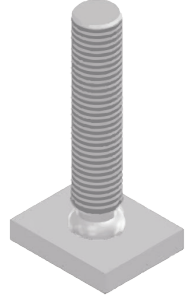
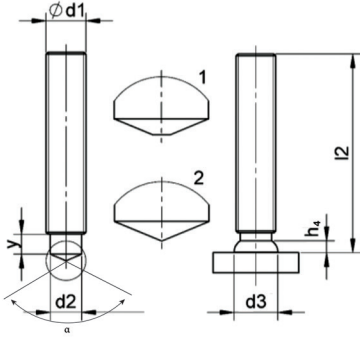
* Tüm ölçüler mm cinsindedir. / All dimensions are in mm.

* Tüm boy ölçülerinde [+0,1/-0,5] mm tolerans değeri olasıdır. / A tolerance value of [+0,1/-0,5] mm is possible for all length dimensions.


* Ölçü standart M06 ve M24 arasındır (M14 ve M24 ölçüleri sorunuz) / Size standard is between M06 and M24 (Ask for M14 and M24 dimensions)

* Uygulama videosu için QR kodu okutun. / Scan the QR code for the application video.





Malzeme / Material : Paslanmaz Çelik A2-50 Naturel / Stainless Steel A2-50 Natural

Ölçülendirme / Dimensions							Kuvvet / Forces	Ürün / Product
Çap Diameter	Boy Length	Kafa Çapı Head Diameter	Pim Çapı Pin Diameter	Pim Boyu Pin Length	Kafa Altı Under Head	Açı Angle	A2-50 $R_{p0.2}=210 \text{ N/mm}^2$	
d_1	$l_2^{2)}$ +0.6	d_2 ±0.1	$d_3^{1)}$	y+2P	$h_4^{1)}$	α ±7°	Kesme Torku (Nm) Shearing Torque (Nm)	
M8	10	6.2	9.0	4.0	2.5	140°	6.0	03.03RDG3.M810
	12							03.03RDG3.M812
	15							03.03RDG3.M815
	20							03.03RDG3.M820
	25							03.03RDG3.M825
	30							03.03RDG3.M830
	35							03.03RDG3.M835
	40							03.03RDG3.M840
	45							03.03RDG3.M845
	50							03.03RDG3.M850
	55							03.03RDG3.M855
	60							03.03RDG3.M860
	70							03.03RDG3.M870
	80							03.03RDG3.M880
100	03.03RDG3.M8100							

* DIN EN ISO 13918'e uygundur. / Similar to DIN EN ISO 13918.

* Minimum 4 mm ve üstü sac kalınlığına uygulanabilir. / It can be applied to minimum sheet thickness of 4 mm and above

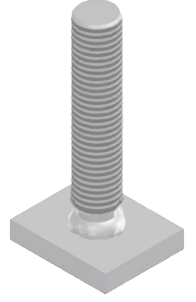
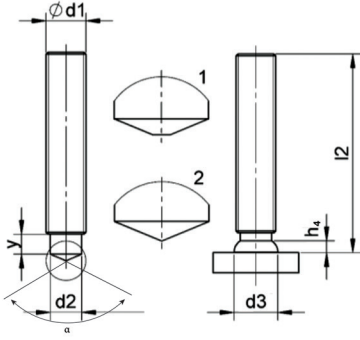
* Tüm ölçüler mm cinsindedir. / All dimensions are in mm.

* Tüm boy ölçülerinde [+0,1/-0,5] mm tolerans değeri olasıdır. / A tolerance value of [+0,1/-0,5] mm is possible for all length dimensions.


* Ölçü standart M06 ve M24 arasındır (M14 ve M24 ölçüleri sorunuz) / Size standard is between M06 and M24 (Ask for M14 and M24 dimensions)

* Uygulama videosu için QR kodu okutun. / Scan the QR code for the application video.





Malzeme / Material : Paslanmaz Çelik A2-50 Naturel / Stainless Steel A2-50 Natural

Ölçülendirme / Dimensions							Kuvvet / Forces	Ürün / Product
Çap Diameter	Boy Length	Kafa Çapı Head Diameter	Pim Çapı Pin Diameter	Pim Boyu Pin Length	Kafa Altı Under Head	Açı Angle	A2-50 $R_{p0.2}=210 \text{ N/mm}^2$	
d_1	$l_2^{2)}$ +0.6	d_2 ±0.1	$d_3^{1)}$	y+2P	$h_4^{1)}$	α ±7°	Kesme Torku (Nm) Shearing Torque (Nm)	
M10	10	7.9	11.5	5.0	3.0	140°	12.0	03.03RDG3.M1010
	12							03.03RDG3.M1012
	15							03.03RDG3.M1015
	20							03.03RDG3.M1020
	25							03.03RDG3.M1025
	30							03.03RDG3.M1030
	35							03.03RDG3.M1035
	40							03.03RDG3.M1040
	45							03.03RDG3.M1045
	50							03.03RDG3.M1050
	55							03.03RDG3.M1055
	60							03.03RDG3.M1060
	70							03.03RDG3.M1070
	80							03.03RDG3.M1080
100	03.03RDG3.M10100							

* DIN EN ISO 13918'e uygundur. / Similar to DIN EN ISO 13918.

* Minimum 4 mm ve üstü sac kalınlığına uygulanabilir. / It can be applied to minimum sheet thickness of 4 mm and above

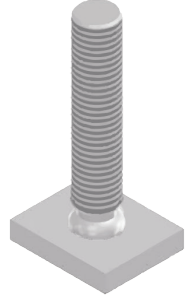
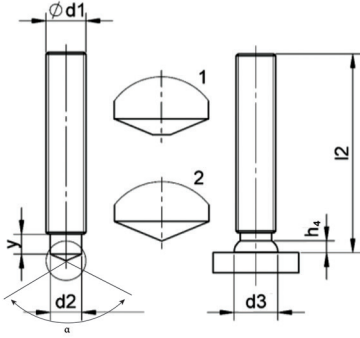
* Tüm ölçüler mm cinsindedir. / All dimensions are in mm.

* Tüm boy ölçülerinde [+0,1/-0,5] mm tolerans değeri olasıdır. / A tolerance value of [+0,1/-0,5] mm is possible for all length dimensions.

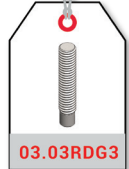
* Ölçü standart M06 ve M24 arasındadır (M14 ve M24 ölçüleri sorunuz) / Size standard is between M06 and M24 (Ask for M14 and M24 dimensions)

* Uygulama videosu için QR kodu okutun. / Scan the QR code for the application video.





Malzeme / Material : Paslanmaz Çelik A2-50 Naturel / Stainless Steel A2-50 Natural

Ölçülendirme / Dimensions							Kuvvet / Forces	Ürün / Product
Çap Diameter	Boy Length	Kafa Çapı Head Diameter	Pim Çapı Pin Diameter	Pim Boyu Pin Length	Kafa Altı Under Head	Açı Angle	A2-50 $R_{p0.2}=210 \text{ N/mm}^2$	
d_1	$l_2^{2)}$ +0.6	d_2 ±0.1	$d_3^{1)}$	y+2P	$h_4^{1)}$	α ±7°	Kesme Torku (Nm) Shearing Torque (Nm)	
M12	10	9.5	13.5	6.0	4.0	140°	20.0	03.03RDG3.M1210
	12							03.03RDG3.M1212
	15							03.03RDG3.M1215
	20							03.03RDG3.M1220
	25							03.03RDG3.M1225
	30							03.03RDG3.M1230
	35							03.03RDG3.M1235
	40							03.03RDG3.M1240
	45							03.03RDG3.M1245
	50							03.03RDG3.M1250
	55							03.03RDG3.M1255
	60							03.03RDG3.M1260
	70							03.03RDG3.M1270
	80							03.03RDG3.M1280
100	03.03RDG3.M12100							

* DIN EN ISO 13918'e uygundur. / Similar to DIN EN ISO 13918.

* Minimum 4 mm ve üstü sac kalınlığına uygulanabilir. / It can be applied to minimum sheet thickness of 4 mm and above

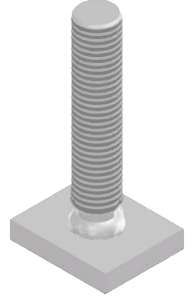
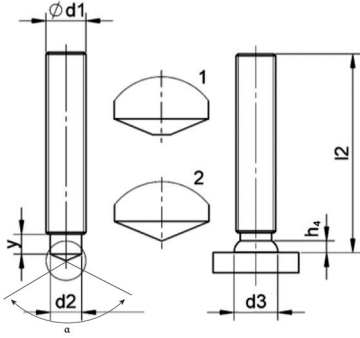
* Tüm ölçüler mm cinsindedir. / All dimensions are in mm.

* Tüm boy ölçülerinde [+0,1/-0,5] mm tolerans değeri olasıdır. / A tolerance value of [+0,1/-0,5] mm is possible for all length dimensions.


* Ölçü standart M06 ve M24 arasındadır (M14 ve M24 ölçüleri sorunuz) / Size standard is between M06 and M24 (Ask for M14 and M24 dimensions)

* Uygulama videosu için QR kodu okutun. / Scan the QR code for the application video.





Malzeme / Material : Paslanmaz Çelik A2-50 Naturel / Stainless Steel A2-50 Natural

Ölçülendirme / Dimensions							Kuvvet / Forces	Ürün / Product
Çap Diameter	Boy Length	Kafa Çapı Head Diameter	Pim Çapı Pin Diameter	Pim Boyu Pin Length	Kafa Altı Under Head	Açı Angle	A2-50 $R_{p0.2}=210 \text{ N/mm}^2$	
d_1	$l_2^{2)}$ +0.6	d_2 ±0.1	$d_3^{1)}$	y+2P	$h_4^{1)}$	α ±7°	Kesme Torku (Nm) Shearing Torque (Nm)	
M16	10	13.2	18.0	7.5	5.0	140°	50.0	03.03RDG3.M1610
	12							03.03RDG3.M1612
	15							03.03RDG3.M1615
	20							03.03RDG3.M1620
	25							03.03RDG3.M1625
	30							03.03RDG3.M1630
	35							03.03RDG3.M1635
	40							03.03RDG3.M1640
	45							03.03RDG3.M1645
	50							03.03RDG3.M1650
	55							03.03RDG3.M1655
	60							03.03RDG3.M1660
	70							03.03RDG3.M1670
	80							03.03RDG3.M1680
100	03.03RDG3.M16100							

* DIN EN ISO 13918'e uygundur. / Similar to DIN EN ISO 13918.

* Minimum 4 mm ve üstü sac kalınlığına uygulanabilir. / It can be applied to minimum sheet thickness of 4 mm and above

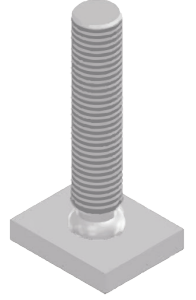
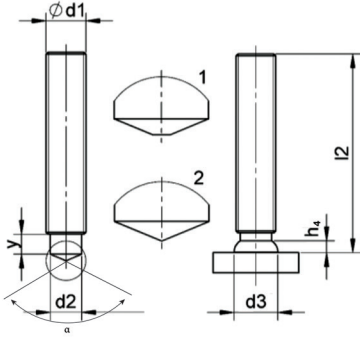
* Tüm ölçüler mm cinsindedir. / All dimensions are in mm.

* Tüm boy ölçülerinde [+0,1/-0,5] mm tolerans değeri olasıdır. / A tolerance value of [+0,1/-0,5] mm is possible for all length dimensions.


* Ölçü standart M06 ve M24 arasındadır (M14 ve M24 ölçüleri sorunuz) / Size standard is between M06 and M24 (Ask for M14 and M24 dimensions)

* Uygulama videosu için QR kodu okutun. / Scan the QR code for the application video.





Malzeme / Material : Paslanmaz Çelik A2-50 Naturel / Stainless Steel A2-50 Natural

Ölçülendirme / Dimensions							Kuvvet / Forces	Ürün / Product
Çap Diameter	Boy Length	Kafa Çapı Head Diameter	Pim Çapı Pin Diameter	Pim Boyu Pin Length	Kafa Altı Under Head	Açı Angle	A2-50 $R_{p0.2}=210 \text{ N/mm}^2$	
d_1	$l_2^{2)}$ +0.6	d_2 ±0.1	$d_3^{1)}$	y+2P	$h_4^{1)}$	α ±7°	Kesme Torku (Nm) Shearing Torque (Nm)	
M20	10	16.5	23.0	9.0	6.0	140°	95.0	03.03RDG3.M2010
	12							03.03RDG3.M2012
	15							03.03RDG3.M2015
	20							03.03RDG3.M2020
	25							03.03RDG3.M2025
	30							03.03RDG3.M2030
	35							03.03RDG3.M2035
	40							03.03RDG3.M2040
	45							03.03RDG3.M2045
	50							03.03RDG3.M2050
	55							03.03RDG3.M2055
	60							03.03RDG3.M2060
	70							03.03RDG3.M2070
	80							03.03RDG3.M2080
100	03.03RDG3.M20100							

* DIN EN ISO 13918'e uygundur. / Similar to DIN EN ISO 13918.

* Minimum 4 mm ve üstü sac kalınlığına uygulanabilir. / It can be applied to minimum sheet thickness of 4 mm and above

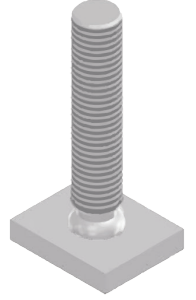
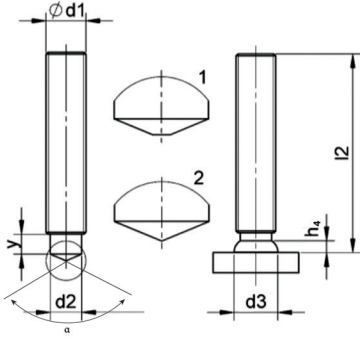
* Tüm ölçüler mm cinsindedir. / All dimensions are in mm.

* Tüm boy ölçülerinde [+0,1/-0,5] mm tolerans değeri olasıdır. / A tolerance value of [+0,1/-0,5] mm is possible for all length dimensions.


* Ölçü standart M06 ve M24 arasındadır (M14 ve M24 ölçüleri sorunuz) / Size standard is between M06 and M24 (Ask for M14 and M24 dimensions)

* Uygulama videosu için QR kodu okutun. / Scan the QR code for the application video.





Malzeme / Material : Paslanmaz Çelik A2-50 Naturel / Stainless Steel A2-50 Natural

Ölçülendirme / Dimensions							Kuvvet / Forces	Ürün / Product
Çap Diameter	Boy Length	Kafa Çapı Head Diameter	Pim Çapı Pin Diameter	Pim Boyu Pin Length	Kafa Altı Under Head	Açı Angle	A2-50 $R_{p0.2}=210 \text{ N/mm}^2$	
d_1	$l_2^{2)}$ +0.6	d_2 ±0.1	$d_3^{1)}$	$y+2P$	$h_4^{1)}$	α ±7°	Kesme Torku (Nm) Shearing Torque (Nm)	
M24	10	20.0	28.0	12.0	7.0	140°	165.0	03.03RDG3.M2410
	12							03.03RDG3.M2412
	15							03.03RDG3.M2415
	20							03.03RDG3.M2420
	25							03.03RDG3.M2425
	30							03.03RDG3.M2430
	35							03.03RDG3.M2435
	40							03.03RDG3.M2440
	45							03.03RDG3.M2445
	50							03.03RDG3.M2450
	55							03.03RDG3.M2455
	60							03.03RDG3.M2460
	70							03.03RDG3.M2470
	80							03.03RDG3.M2480
100	03.03RDG3.M24100							

* DIN EN ISO 13918'e uygundur. / Similar to DIN EN ISO 13918.

* Minimum 4 mm ve üstü sac kalınlığına uygulanabilir. / It can be applied to minimum sheet thickness of 4 mm and above

* Tüm ölçüler mm cinsindedir. / All dimensions are in mm.

* Tüm boy ölçülerinde [+0,1/-0,5] mm tolerans değeri olasıdır. / A tolerance value of [+0,1/-0,5] mm is possible for all length dimensions.

* Ölçü standart M06 ve M24 arasındadır (M14 ve M24 ölçüleri sorunuz) / Size standard is between M06 and M24 (Ask for M14 and M24 dimensions)

* Uygulama videosu için QR kodu okutun. / Scan the QR code for the application video.

