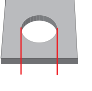
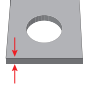
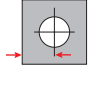



Malzeme / Material : 300 Serisi Paslanmaz Çelik / 300 Series Stainless Steel

Ölçülendirme / Dimensions									Kuvvet / Forces	Ürün / Product
Çap Diameter	Shank Code				A Max.	C Max.	E ±0.25	T ±0.25	Önerilen Somun Sıkma Torku Recommended Nut Tightening Torque Nm	
M2 x 0.45	0	4.22	0.8	4.8	0.77	4.2	6.35	1.5	11.2 - 15.6	04.SS000.M02000
	1		1.0		0.97					04.SS000.M02001
	2		1.4		1.38					04.SS000.M02002
	3		2.29		2.21					04.SS000.M02003

* Tüm ölçüler mm cinsindedir. / All dimensions are in mm

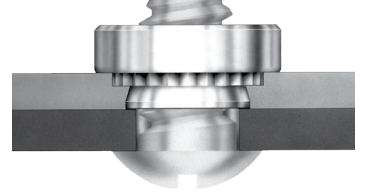
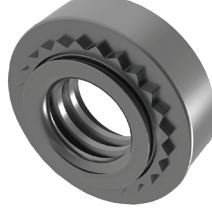
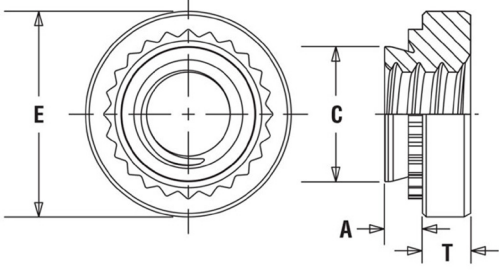
* Tüm boy ölçülerinde [+0,1/-0,5] mm tolerans değeri olasıdır. / A tolerance value of [+0,1/-0,5] mm is possible for all length dimensions

* 1,5 mm veya daha az malzeme kalınlığı için öerste bir havşa deliği gereklidir. / For material thickness of 1.5mm or less, a countersunk hole is needed in the anvil.

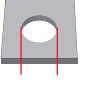
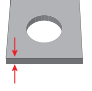
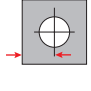
* 1,5 mm veya daha fazla malzeme kalınlığı için öerste bir geçiş deliği gereklidir. / For material thickness of 1.5mm or more, a trough-hole is needed in the anvil

* Uygulama videosu için QR kodu okutun. / Scan the QR code for the application video.





Malzeme / Material : 300 Serisi Paslanmaz Çelik / 300 Series Stainless Steel

Ölçülendirme / Dimensions									Kuvvet / Forces	Ürün / Product
Çap Diameter	Shank Code				A Max.	C Max.	E ±0.25	T ±0.25	Önerilen Somun Sıkma Torku Recommended Nut Tightening Torque Nm	
M3 x 0.5	0	4.22	0.8	4.8	0.77	4.2	6.35	1.5	11.2 - 15.6	04.SS000.M03000
	1		1.0		0.97					04.SS000.M03001
	2		1.4		1.38					04.SS000.M03002
	3		2.29		2.21					04.SS000.M03003

* Tüm ölçüler mm cinsindedir. / All dimensions are in mm

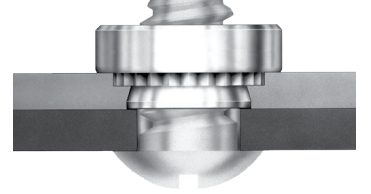
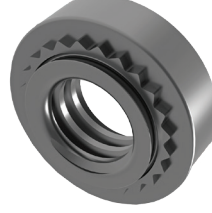
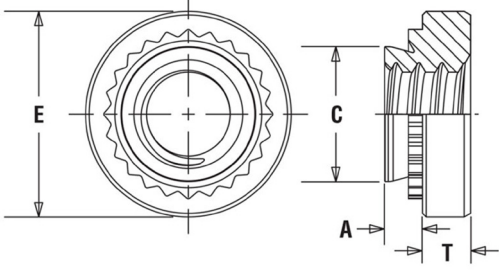
* Tüm boy ölçülerinde [+0,1/-0,5] mm tolerans değeri olasıdır. / A tolerance value of [+0,1/-0,5] mm is possible for all length dimensions

* 1,5 mm veya daha az malzeme kalınlığı için öerste bir havşa deliği gereklidir. / For material thickness of 1.5mm or less, a countersunk hole is needed in the anvil.

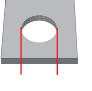
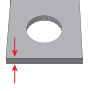
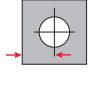

* 1,5 mm veya daha fazla malzeme kalınlığı için öerste bir geçiş deliği gereklidir. / For material thickness of 1.5mm or more, a trough-hole is needed in the anvil

* Uygulama videosu için QR kodu okutun. / Scan the QR code for the application video.





Malzeme / Material : 300 Serisi Paslanmaz Çelik / 300 Series Stainless Steel

Ölçülendirme / Dimensions									Kuvvet / Forces	Ürün / Product
Çap Diameter	Shank Code	 +0.08	 Min.	 Min.	A Max.	C Max.	E ±0.25	T ±0.25	Önerilen Somun Sıkma Torku Recommended Nut Tightening Torque Nm	 04.SS000
M3.5 x 0.6	0	4.75	0.8	5.6	0.77	4.73	7.11	1.5	13.4 - 26.7	04.SS000.M03500
	1		1.0		0.97					04.SS000.M03501
	2		1.4		1.38					04.SS000.M03502
	3		2.29		2.21					04.SS000.M03503

* Tüm ölçüler mm cinsindedir. / All dimensions are in mm

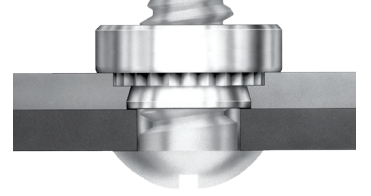
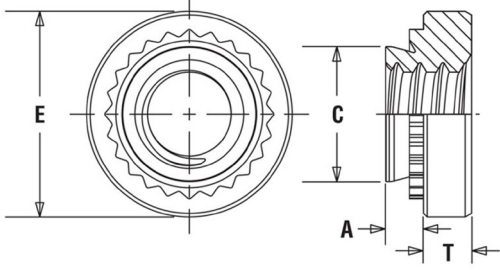
* Tüm boy ölçülerinde [+0,1/-0,5] mm tolerans değeri olasıdır. / A tolerance value of [+0,1/-0,5] mm is possible for all length dimensions

* 1,5 mm veya daha az malzeme kalınlığı için öerste bir havşa deliği gereklidir. / For material thickness of 1.5mm or less, a countersunk hole is needed in the anvil.

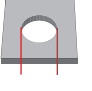
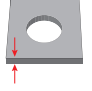
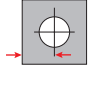

* 1,5 mm veya daha fazla malzeme kalınlığı için öerste bir geçiş deliği gereklidir. / For material thickness of 1.5mm or more, a trough-hole is needed in the anvil

* Uygulama videosu için QR kodu okutun. / Scan the QR code for the application video.





Malzeme / Material : 300 Serisi Paslanmaz Çelik / 300 Series Stainless Steel

Ölçülendirme / Dimensions									Kuvvet / Forces	Ürün / Product
Çap Diameter	Shank Code	 +0.08	 Min.	 Min.	A Max.	C Max.	E ±0.25	T ±0.25	Önerilen Somun Sıkma Torku Recommended Nut Tightening Torque Nm	 04.SS000
M4 x 0.7	0	5.41	0.8	6.9	0.77	5.38	7.87	2.0	13.4 - 26.7	04.SS000.M04000
	1		1.0		0.97					04.SS000.M04001
	2		1.4		1.38					04.SS000.M04002
	3		2.29		2.21					04.SS000.M04003

* Tüm ölçüler mm cinsindedir. / All dimensions are in mm

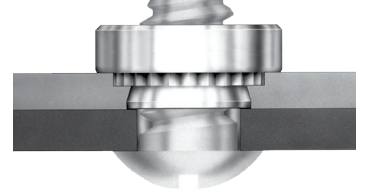
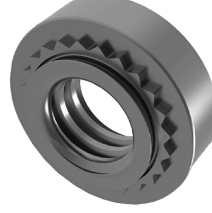
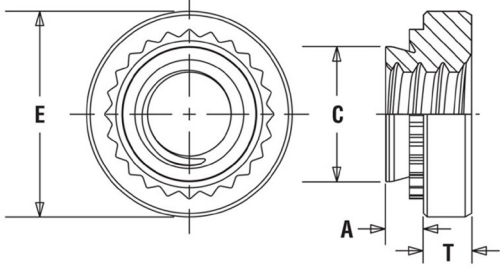
* Tüm boy ölçülerinde [+0,1/-0,5] mm tolerans değeri olasıdır. / A tolerance value of [+0,1/-0,5] mm is possible for all length dimensions

* 1,5 mm veya daha az malzeme kalınlığı için öerste bir havşa deliği gereklidir. / For material thickness of 1.5mm or less, a countersunk hole is needed in the anvil.

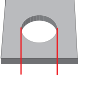
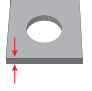
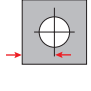

* 1,5 mm veya daha fazla malzeme kalınlığı için öerste bir geçiş deliği gereklidir. / For material thickness of 1.5mm or more, a trough-hole is needed in the anvil

* Uygulama videosu için QR kodu okutun. / Scan the QR code for the application video.





Malzeme / Material : 300 Serisi Paslanmaz Çelik / 300 Series Stainless Steel

Ölçülendirme / Dimensions								Kuvvet / Forces	Ürün / Product	
Çap Diameter	Shank Code				A Max.	C Max.	E ±0.25	T ±0.25	Önerilen Somun Sıkma Torku Recommended Nut Tightening Torque Nm	
M5 x 0.8	0	6.35	0.8	7.1	0.77	6.33	8.64	2.0	18.0 - 38.0	04.SS000.M05000
	1		1.0		0.97					04.SS000.M05001
	2		1.4		1.38					04.SS000.M05002
	3		2.29		2.21					04.SS000.M05003

* Tüm ölçüler mm cinsindedir. / All dimensions are in mm

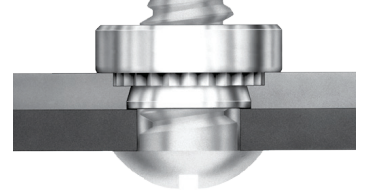
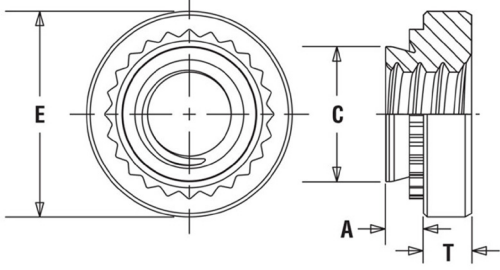
* Tüm boy ölçülerinde [+0,1/-0,5] mm tolerans değeri olasıdır. / A tolerance value of [+0,1/-0,5] mm is possible for all length dimensions

* 1,5 mm veya daha az malzeme kalınlığı için öerste bir havşa deliği gereklidir. / For material thickness of 1.5mm or less, a countersunk hole is needed in the anvil.

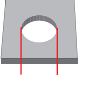
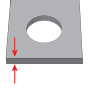
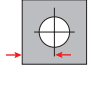

* 1,5 mm veya daha fazla malzeme kalınlığı için öerste bir geçiş deliği gereklidir. / For material thickness of 1.5mm or more, a trough-hole is needed in the anvil

* Uygulama videosu için QR kodu okutun. / Scan the QR code for the application video.





Malzeme / Material : 300 Serisi Paslanmaz Çelik / 300 Series Stainless Steel

Ölçülendirme / Dimensions									Kuvvet / Forces	Ürün / Product
Çap Diameter	Shank Code				A Max.	C Max.	E ±0.25	T ±0.25	Önerilen Somun Sıkma Torku Recommended Nut Tightening Torque Nm	
M6 x 1.0	0	8.75	1.2	8.6	1.15	8.73	11.18	4.08	27.0 - 36.0	04.SS000.M06000
	1		1.4		1.38					04.SS000.M06001
	2		2.29		2.21					04.SS000.M06002
	3		3.18		3.05					04.SS000.M06003

* Tüm ölçüler mm cinsindedir. / All dimensions are in mm

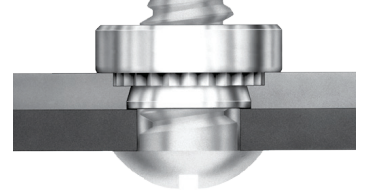
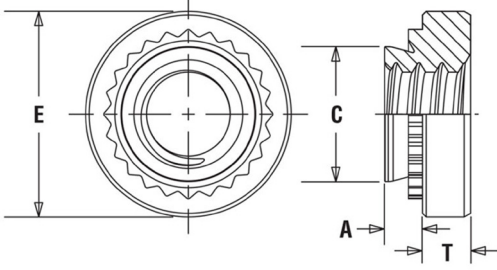
* Tüm boy ölçülerinde [+0,1/-0,5] mm tolerans değeri olasıdır. / A tolerance value of [+0,1/-0,5] mm is possible for all length dimensions

* 1,5 mm veya daha az malzeme kalınlığı için öerste bir havşa deliği gereklidir. / For material thickness of 1.5mm or less, a countersunk hole is needed in the anvil.

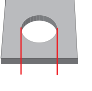
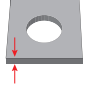
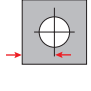

* 1,5 mm veya daha fazla malzeme kalınlığı için öerste bir geçiş deliği gereklidir. / For material thickness of 1.5mm or more, a trough-hole is needed in the anvil

* Uygulama videosu için QR kodu okutun. / Scan the QR code for the application video.





Malzeme / Material : 300 Serisi Paslanmaz Çelik / 300 Series Stainless Steel

Ölçülendirme / Dimensions									Kuvvet / Forces	Ürün / Product
Çap Diameter	Shank Code	 +0.08	 Min.	 Min.	A Max.	C Max.	E ±0.25	T ±0.25	Önerilen Somun Sıkma Torku Recommended Nut Tightening Torque Nm	 04.SS000
M8 x 1.25	1	10.5	1.4	9.7	1.38	10.47	12.7	5.47	27.0 - 36.0	04.SS000.M08001
	2		2.29		2.21					04.SS000.M08002
	3		3.2		3.05					04.SS000.M08003

* Tüm ölçüler mm cinsindedir. / All dimensions are in mm

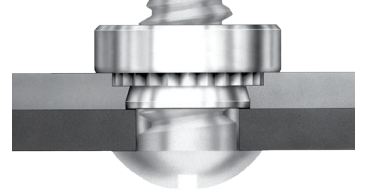
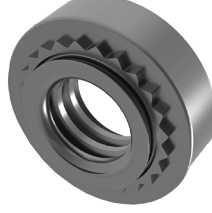
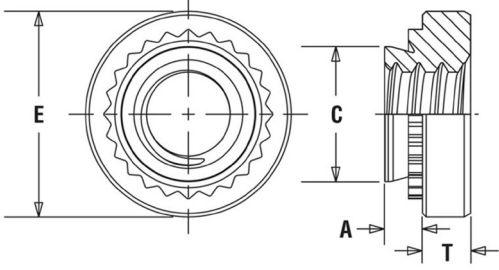
* Tüm boy ölçülerinde [+0,1/-0,5] mm tolerans değeri olasıdır. / A tolerance value of [+0,1/-0,5] mm is possible for all length dimensions

* 1,5 mm veya daha az malzeme kalınlığı için öerste bir havşa deliği gereklidir. / For material thickness of 1.5mm or less, a countersunk hole is needed in the anvil.

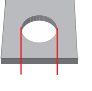
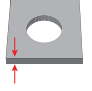
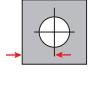

* 1,5 mm veya daha fazla malzeme kalınlığı için öerste bir geçiş deliği gereklidir. / For material thickness of 1.5mm or more, a trough-hole is needed in the anvil

* Uygulama videosu için QR kodu okutun. / Scan the QR code for the application video.





Malzeme / Material : 300 Serisi Paslanmaz Çelik / 300 Series Stainless Steel

Ölçülendirme / Dimensions								Kuvvet / Forces	Ürün / Product	
Çap Diameter	Shank Code	 +0.08	 Min.	 Min.	A Max.	C Max.	E ±0.25	T ±0.25	Önerilen Somun Sıkma Torku Recommended Nut Tightening Torque Nm	 04.SS000
M10 x 1.5	1	14.0	2.29	13.5	2.21	13.97	17.35	7.48	32.0 - 50.0	04.SS000.M10001
	2		3.18		3.05					04.SS000.M10002
	3		6.4		6.00					04.SS000.M10003

* Tüm ölçüler mm cinsindedir. / All dimensions are in mm

* Tüm boy ölçülerinde [+0,1/-0,5] mm tolerans değeri olasıdır. / A tolerance value of [+0,1/-0,5] mm is possible for all length dimensions

* 1,5 mm veya daha az malzeme kalınlığı için öerste bir havşa deliği gereklidir. / For material thickness of 1.5mm or less, a countersunk hole is needed in the anvil.

* 1,5 mm veya daha fazla malzeme kalınlığı için öerste bir geçiş deliği gereklidir. / For material thickness of 1.5mm or more, a trough-hole is needed in the anvil

* Uygulama videosu için QR kodu okutun. / Scan the QR code for the application video.

