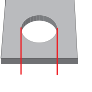
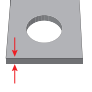
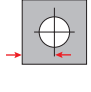



**Malzeme / Material : 300 Serisi Paslanmaz Çelik / 300 Series Stainless Steel**

Ölçülendirme / Dimensions										Kuvvet / Forces	Ürün / Product
Çap Diameter	Shaft Kodu Shank Code				A Max.	C Max.	D Max.	E Max.	T Max.	Torque-out Tork Çıkışı (N-m)	
M3x 0.5	M3	6	1 - 1.78	4.32	1.53	5.98	5.52	7.01	3.56	2.25	04.PLC00.M03000

\* Tüm ölçüler mm cinsindedir. / All dimensions are in mm

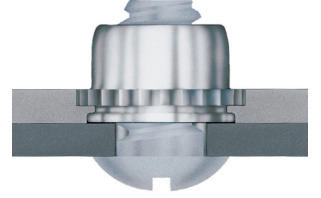
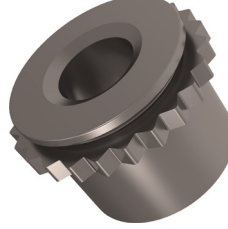
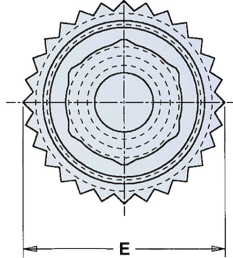
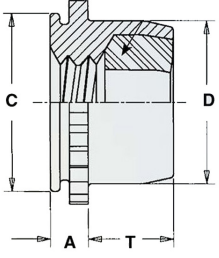
\* Tüm boy ölçülerinde [+0,1/-0,5] mm tolerans değeri olasıdır. / A tolerance value of [+0,1/-0,5] mm is possible for all length dimensions

\* 1,5 mm veya daha az malzeme kalınlığı için örste bir havşa deliği gereklidir. / For material thickness of 1.5mm or less, a countersunk hole is needed in the anvil.

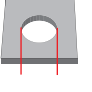
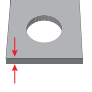
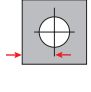

\* 1,5 mm veya daha fazla malzeme kalınlığı için örste bir geçiş deliği gereklidir. / For material thickness of 1.5mm or more, a trough-hole is needed in the anvil

\* Uygulama videosu için QR kodu okutun. / Scan the QR code for the application video.





**Malzeme / Material : 300 Serisi Paslanmaz Çelik / 300 Series Stainless Steel**

Ölçülendirme / Dimensions										Kuvvet / Forces	Ürün / Product
Çap Diameter	Shaft Kodu Shank Code				A Max.	C Max.	D Max.	E Max.	T Max.	Torque-out Tork Çıkışı (N-m)	
M4x 0.7	M4	7.5	1 - 1.78	5.59	1.53	7.48	7.01	8.54	4.2	6.77	04.PLC00.M04000

\* Tüm ölçüler mm cinsindedir. / All dimensions are in mm

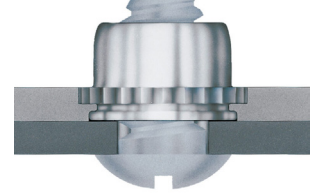
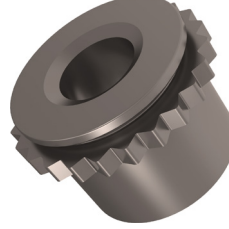
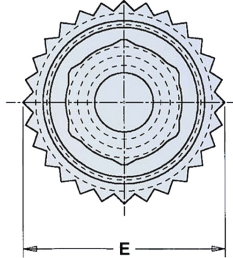
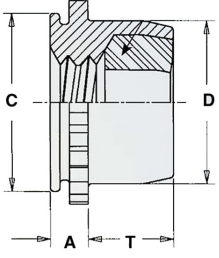
\* Tüm boy ölçülerinde [+0,1/-0,5] mm tolerans değeri olasıdır. / A tolerance value of [+0,1/-0,5] mm is possible for all length dimensions

\* 1,5 mm veya daha az malzeme kalınlığı için örste bir havşa deliği gereklidir. / For material thickness of 1.5mm or less, a countersunk hole is needed in the anvil.

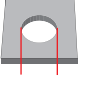
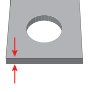
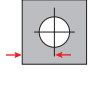

\* 1,5 mm veya daha fazla malzeme kalınlığı için örste bir geçiş deliği gereklidir. / For material thickness of 1.5mm or more, a trough-hole is needed in the anvil

\* Uygulama videosu için QR kodu okutun. / Scan the QR code for the application video.





**Malzeme / Material : 300 Serisi Paslanmaz Çelik / 300 Series Stainless Steel**

Ölçülendirme / Dimensions										Kuvvet / Forces	Ürün / Product
Çap Diameter	Shaft Kodu Shank Code				A Max.	C Max.	D Max.	E Max.	T Max.	Torque-out Tork Çıkışı (N-m)	
M5x 0.8	M5	8	1 - 1.78	6.35	1.53	7.98	7.52	9	4.45	7.9	04.PLC00.M05000

\* Tüm ölçüler mm cinsindedir. / All dimensions are in mm

\* Tüm boy ölçülerinde [+0,1/-0,5] mm tolerans değeri olasıdır. / A tolerance value of [+0,1/-0,5] mm is possible for all length dimensions

\* 1,5 mm veya daha az malzeme kalınlığı için öerste bir havşa deliği gereklidir. / For material thickness of 1.5mm or less, a countersunk hole is needed in the anvil.

\* 1,5 mm veya daha fazla malzeme kalınlığı için öerste bir geçiş deliği gereklidir. / For material thickness of 1.5mm or more, a trough-hole is needed in the anvil

\* Uygulama videosu için QR kodu okutun. / Scan the QR code for the application video.

