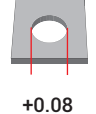
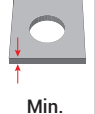
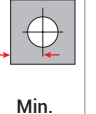



Malzeme / Material : Isıl İşlem Görmüş Karbon Çelik Çinko Kaplama / Heat-Treated Carbon Steel Zinc Plated

Ölçülendirme / Dimensions					Kuvvet / Forces			Ürün / Product	
Çap Diameter	 +0.08	Boy Length ±0.4mm L	 Min.	 Min.	Kafa Çapı Head Diameter H ±0.4	Kafa Altı Under Head S Max.(2)	Kafa Kalınlığı Head Thickness T Max.	Önerilen Somun Sıkma Torku Recommended Nut Tightening Torque Nm	 04.TFH00
M3X0.5	3	6.0	0.51	5.6	4.5	1.8	0.64	1.3	04.TFH00.M03006
		8.0							04.TFH00.M03008
		10.0							04.TFH00.M03010
		12.0							04.TFH00.M03012
		15.0							04.TFH00.M03015
		18.0							04.TFH00.M03018
		20.0							04.TFH00.M03020
		25.0							04.TFH00.M03025

* Tüm ölçüler mm cinsindedir. / All dimensions are in mm

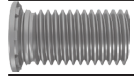
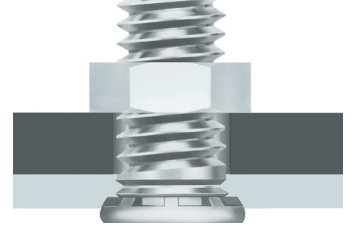
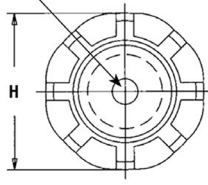
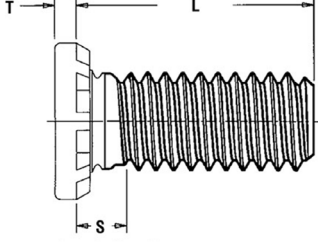
* Tüm boy ölçülerinde [+0,1/-0,5] mm tolerans değeri olasıdır. / A tolerance value of [+0,1/-0,5] mm is possible for all length dimensions

* 1,5 mm veya daha az malzeme kalınlığı için öerste bir havşa deliği gereklidir. / For material thickness of 1.5mm or less, a countersunk hole is needed in the anvil.


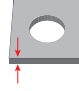
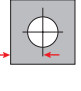

* 1,5 mm veya daha fazla malzeme kalınlığı için öerste bir geçiş deliği gereklidir. / For material thickness of 1.5mm or more, a through-hole is needed in the anvil

* Uygulama videosu için QR kodu okutun. / Scan the QR code for the application video.





Malzeme / Material : Isıl İşlem Görmüş Karbon Çelik Çinko Kaplama / Heat-Treated Carbon Steel Zinc Plated

Ölçülendirme / Dimensions					Kuvvet / Forces			Ürün / Product	
Çap Diameter	 +0.08	Boy Length ±0.4mm L	 Min.	 Min.	Kafa Çapı Head Diameter H ±0.4	Kafa Altı Under Head S Max.(2)	Kafa Kalınlığı Head Thickness T Max.	Önerilen Somun Sıkma Torku Recommended Nut Tightening Torque Nm	 04.TFH00
M4X0.7	4	8.0	0.51	7.2	5.8	1.8	0.64	2.1	04.TFH00.M04008
		10.0							04.TFH00.M04010
		12.0							04.TFH00.M04012
		15.0							04.TFH00.M04015
		18.0							04.TFH00.M04018
		20.0							04.TFH00.M04020
		25.0							04.TFH00.M04025
		30.0							04.TFH00.M04030
		35.0							04.TFH00.M04035

* Tüm ölçüler mm cinsindedir. / All dimensions are in mm

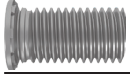
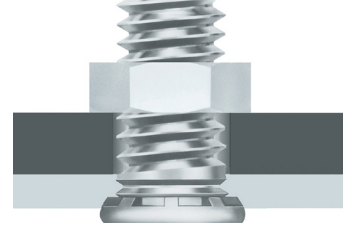
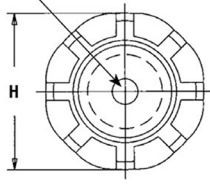
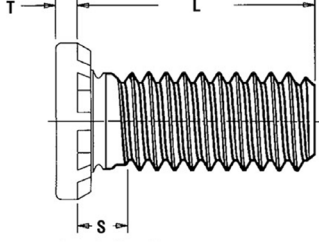
* Tüm boy ölçülerinde [+0,1/-0,5] mm tolerans değeri olasıdır. / A tolerance value of [+0,1/-0,5] mm is possible for all length dimensions

* 1,5 mm veya daha az malzeme kalınlığı için öerste bir havşa deliği gereklidir. / For material thickness of 1.5mm or less, a countersunk hole is needed in the anvil.


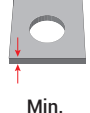
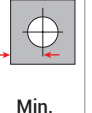

* 1,5 mm veya daha fazla malzeme kalınlığı için öerste bir geçiş deliği gereklidir. / For material thickness of 1.5mm or more, a through-hole is needed in the anvil

* Uygulama videosu için QR kodu okutun. / Scan the QR code for the application video.





Malzeme / Material : Isıl İşlem Görmüş Karbon Çelik Çinko Kaplama / Heat-Treated Carbon Steel Zinc Plated

Ölçülendirme / Dimensions					Kuvvet / Forces			Ürün / Product	
Çap Diameter	 +0.08	Boy Length ±0.4mm L	 Min.	 Min.	Kafa Çapı Head Diameter H ±0.4	Kafa Altı Under Head S Max.(2)	Kafa Kalınlığı Head Thickness T Max.	Önerilen Somun Sıkma Torku Recommended Nut Tightening Torque Nm	 04.TFH00
M5X0.8	5	8.0	0.51	7.2	6.4	2.3	0.64	3.4	04.TFH00.M05008
		10.0							04.TFH00.M05010
		12.0							04.TFH00.M05012
		15.0							04.TFH00.M05015
		18.0							04.TFH00.M05018
		20.0							04.TFH00.M05020
		25.0							04.TFH00.M05025
		30.0							04.TFH00.M05030
		35.0							04.TFH00.M05035

* Tüm ölçüler mm cinsindedir. / All dimensions are in mm

* Tüm boy ölçülerinde [+0,1/-0,5] mm tolerans değeri olasıdır. / A tolerance value of [+0,1/-0,5] mm is possible for all length dimensions

* 1,5 mm veya daha az malzeme kalınlığı için öerste bir havşa deliği gereklidir. / For material thickness of 1.5mm or less, a countersunk hole is needed in the anvil.

* 1,5 mm veya daha fazla malzeme kalınlığı için öerste bir geçiş deliği gereklidir. / For material thickness of 1.5mm or more, a through-hole is needed in the anvil

* Uygulama videosu için QR kodu okutun. / Scan the QR code for the application video.

